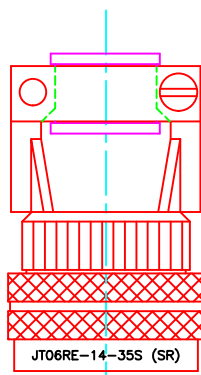


C456110A

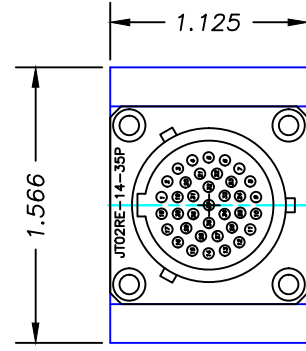
DATE	BY	REVISION	LOC.

AMPHENOL
JT06RE-14-35S(SR)
PLUG & STRAIN RELIEF.

THIS CONNECTOR
REQUIRES A SET OF
CONNECTOR TOOLS.



JT06RE-14-35S (SR)



1.566

1.125

JT02RE-14-35P

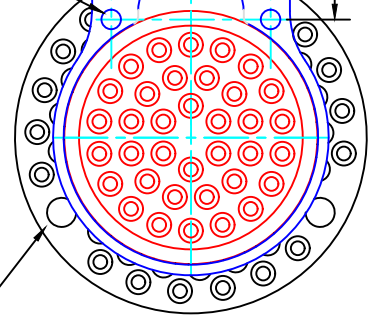
AMPHENOL
JT02RE-14-35P
RECEPTACLE

2 HOLES
4-40 THREAD
0.25 MIN THD

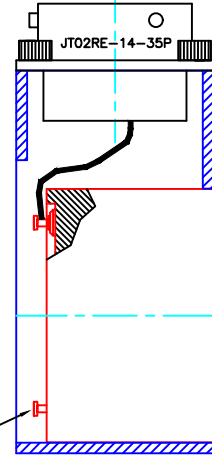
JT02RE-14-35P

0.906

0.755



3 THROUGH HOLES ON 1.700 B.C. AT 120° SPACING.
HOLES 0.166 Ø FOR 8-32 OR M4 SCREW CLEARANCE.



C574154B
CONNECTOR
BRACKET

STATOR

1.441
Ø

36 STATOR
SOLDER
TERMINALS

ROTOR

36 ROTOR SOLDER TERMINALS

1.999 ±.0005
Ø

0.250

3.82 AS SHOWN, WITH CONNECTOR
BRACKET 0.1 ABOVE STATOR TERMINALS

THE CONNECTOR BRACKET IS GLUED ONTO THE SLIP RING STATOR
WITH AN ADHESIVES SUCH AS HARDMAN 4002 EPOXY
OR A LOCTITE RETAINING COMPOUND.

MODEL SR36M/EL2
36 CONNECTION SLIP RING WITH EXTENDED LIFE BRUSHES
WIRING DIAGRAM IS SR36M C252017A.DWG

MICHIGAN
SCIENTIFIC CORPORATION
08500 ANCE ROAD
CHARLEVOIX, MI 49720
PHONE: (231)547-5511 FAX: (231)547-7070

DESIGNED BY: KDL	DATE: 11-2-22	SCALE: 1:1
TITLE: SR36M-EL2 & C574154B CONNECTOR BRACKET & AMPHENOL JT02RE-14-35S(SR) CONNECTOR		
DRAWING NO.: C456110A		

W:\SLIPRINGS\bundle\EL2\003\C456110A.dwg, 11/3/2022 3:50:46 PM, kdarsen